

1924

NORTHERN PACIFIC RAILWAY COMPANY

AUTHORITY FOR EXPENDITURE

1924

Superintendent's No. 123
No.

Dept. No.
Engineering Dept. No. 134

A. F. E. No. 3

Lake Superior Div. Second District State MINN. Val. Sec. No. 12

AUTHORITY IS REQUESTED FOR A NET EXPENDITURE OF \$ 306.00

Accounting distribution as follows: (Distribution to be made in General Office.)

Original Cost Adjustment
MAR 1924
MADE IN

	Operating Expenses	Profit and Loss	Net Operating Expenses
Cost of property retired	\$	\$	\$
Value of salvage			
Incidental costs			70
Total to Operating Expenses			\$ 70
Total to Profit and Loss			
To Material and Supplies			
To Bills for Collection			
To Other Accounts			
Net charge to investment account—Additions and Betterments			333
Total of distribution			\$ 306

DEPRECIATION DOCUMENT 15100 ENTERED ON EXHIBIT E

G/35 754

Budget reference: Not in Budget

Class of Work: No. 8

Joint facility contract reference: CM&STP RY. CO. CONTRACT DATED OCT. 1, 1900-ART II

The location is - - - on this company's property. To secure rights, it will be necessary

Location: Between Barker and Wrenshall (Minnesota).

Title and Reason: Proposed County Highway Crossing.

A public highway to be known as "Fond du lac Road" was constructed to intersect our track near M.P. 23, Second Sub-division, in Carlton County, between Barker and Wrenshall.

During this construction the grading contractors graded up to our track, and provided a temporary crossing over which to handle roadway machinery. With the completion of the road this temporary crossing was used by vehicles, and to minimize hazard division forces completed the grade with cinders, placed standard planking, and erected signs, overlooking presentation of the subject for informal authority, the work being completed on October 5, 1923.

Section 4256, Compiled Laws of Minnesota, obligates the railway company to establish and maintain crossing, and this AFE is originated that proper accounting may be had.

Completed. Work done by company force under charge of Superintendent

Checked and entered President's Office

ENTERED
Hoe
Budget Record
Office of Chief Engineer

Accounting to concentrate in the office of Superintendent

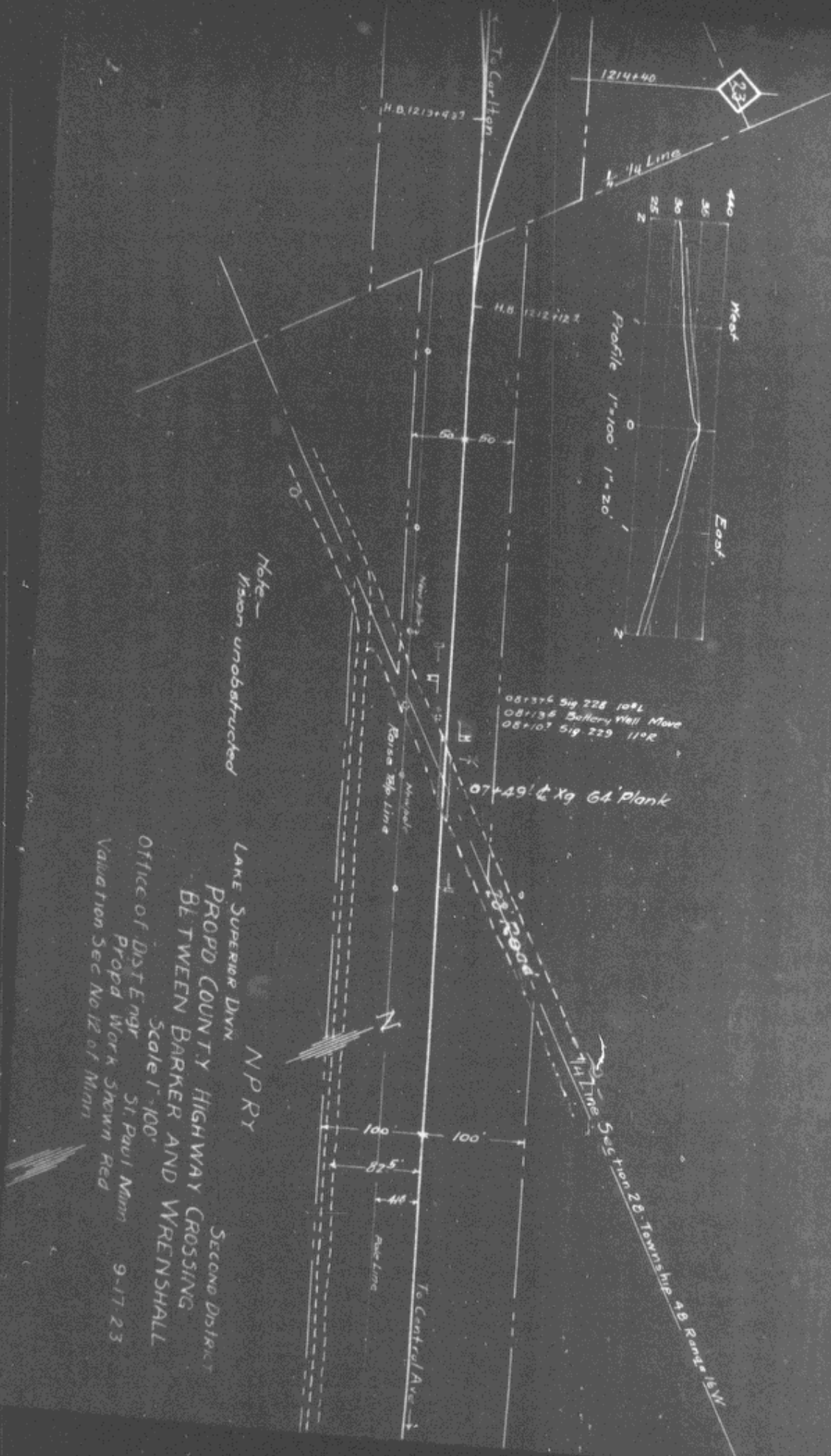
Signature and Title: *W. H. Stearns* Superintendent Date October 17th - 19 23

<i>W. H. Stearns</i> General Superintendent.	<i>W. H. Stearns</i> Chief Engr. Maint. of Way.	<i>W. H. Stearns</i> Assistant General Manager.
<i>W. H. Stearns</i> Mech. Supt., Supt. Telg. or Signal Engr.	<i>W. H. Stearns</i> Chief Engineer.	<i>W. H. Stearns</i> General Manager.
<i>W. H. Stearns</i> For Comptroller.	<i>W. H. Stearns</i> President.	<i>W. H. Stearns</i> Vice President.

Date of Final Approval { 1.10.24 19

COMPTROLLER'S RECORD OF NOTICE OF APPROVAL AND OF COMPLETION

Form No. 1345 issued 19 Work begun 19 Work finished Feb. 14, 1924



LAKES SUPERIOR DIVN
 NPRY
 PROPD COUNTY HIGHWAY CROSSING
 BETWEEN BARKER AND WRENSHALL
 Office of DIST ENGR St. Paul Minn 9-17-23
 Valuation Sec No 12 of Minn.
 Scale 1"=100'
 Propd Work Shown Red

051234 Sig 228 10R
 08134 Battery Well Move
 081107 Sig 229 110R

07+49' & X9 64' Plank

To Central Ave

23